



LYS MARTAGON

Courchevel 1850



M O R E T H A N A V A C A T I O N , A N E X P E R I E N C E



WELCOME

Lys Martagon property has been designed to serve and respond to all customer requests. we are classified 5* stars hotel, we can guarantee the quality of service to our guests.

LYS MARTAGON in a nutshell:

- Located in bellecôte
- 7 suites
- Ski in/Ski out (partner with bernard orcel)
- Free 24 Hour shuttles
- Security agents on 24/24
- 24 hour golden keys concierge
- 300 m² spa (partner with l'oreal & skinceuticals)
- Private restaurant with michelin starred



LOCATION

Ski-in Ski-out / Bellecote slope



«Bellecôte» slope

Main ski lifts

Downtown





ART

AN UNIQUE IMMERSION IN ART DECO AND IN THE 20s !

The Lys Martagon is an invitation to spend time together, in a place where time seems to stand still, between past and present, between beauty and exquisite simplicity.

A cultural gateway with the physical and emotional presence of works of art.

There are paintings by impressionist Armand Guillaumin, also Henri Lebasque or Gustave Carriot, mosaics of colourful Sicis glass, back lit stained glass and ceilings designed by the illustrator Pavel Oriniński, and dozens of works by famous jeweller René Lalique.



ART



SUITES JUNIOR

The Junior suites reflect the very architecture of the Lys Martagon itself: Art Deco details, soft carpets, cleverly selected marbles... everything in harmony.

The organic tones of greens and browns exude Nature; we've thought of everything to help you recharge your batteries and enjoy the wonder of it all.



SUITE JUNIOR



- 42 sqm
- Balcony with mountains and garden view
- Queen size bed
- Separate lounge area
- Ipad
- Safety box
- High-speed Wifi
- Sonos Sound system
- Flat screen TV including Apple TV, Chromecast and streaming services (Netflix, YouTube...)
- Minibar
- Nespresso machine
- 2 bathrooms with bathtub and shower cubicle, 2 toilets, 2 bidets
- Newspapers deliveries upon request
- Wake up service

SUITE
JUNIOR



SUITE
JUNIOR





SUITE
JUNIOR



SUITE
JUNIOR



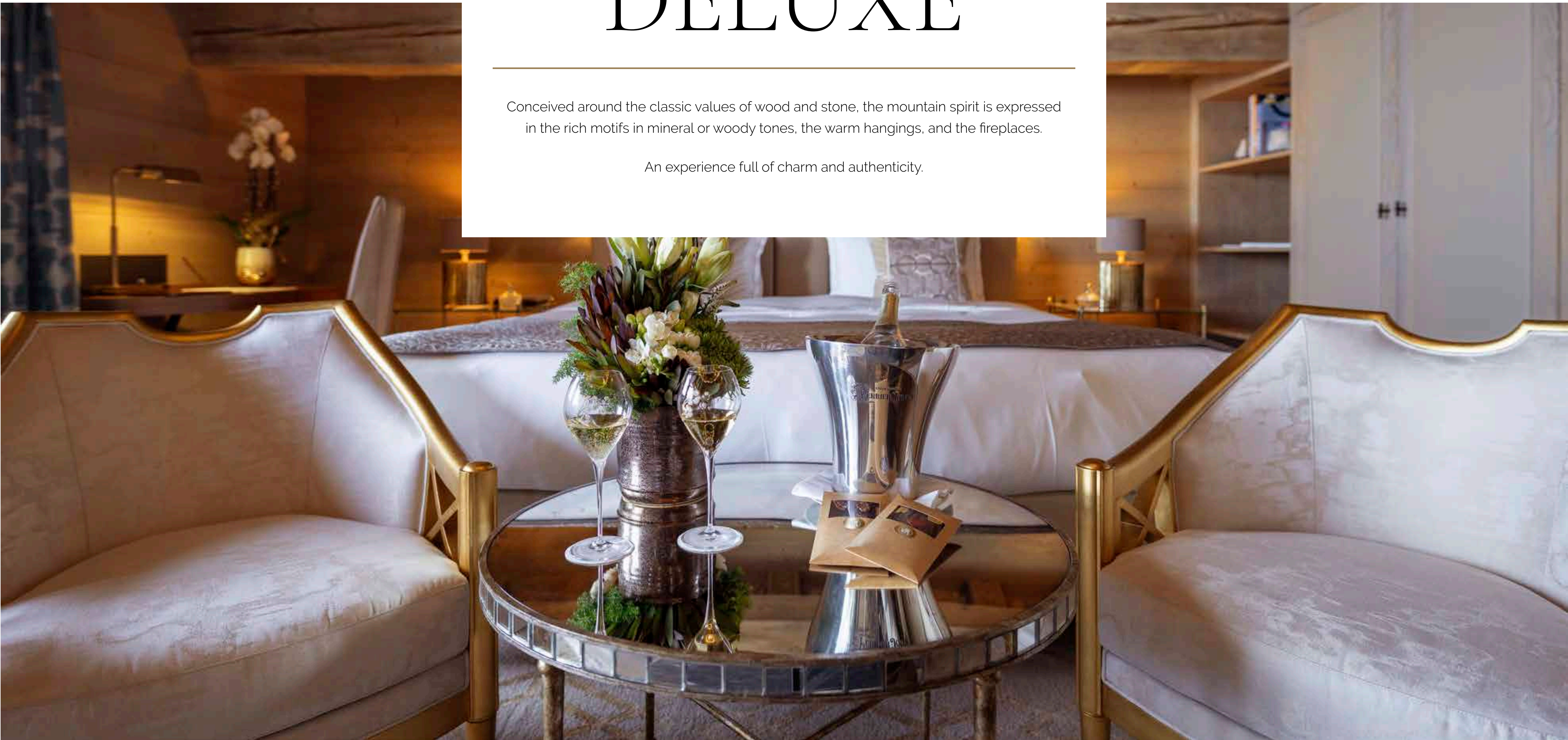
SUITE
JUNIOR



SUITES DELUXE

Conceived around the classic values of wood and stone, the mountain spirit is expressed in the rich motifs in mineral or woody tones, the warm hangings, and the fireplaces.

An experience full of charm and authenticity.





SUITE DELUXE

- 42 sqm
- Balcony with mountains and garden view
- Queen size bed
- Hair styling station
- Fireplace
- Ipad
- Safety box
- High-speed Wifi
- Sonos Sound system
- Flat screen TV including Apple TV, Chromecast and streaming services (Netflix, YouTube...)
- Minibar
- Nespresso machine
- Bathroom with bathtub and shower cubicle, toilet and bidet
- Newspapers deliveries upon request
- Wake up service

SUITE DELUXE



SUITE
DELUXE

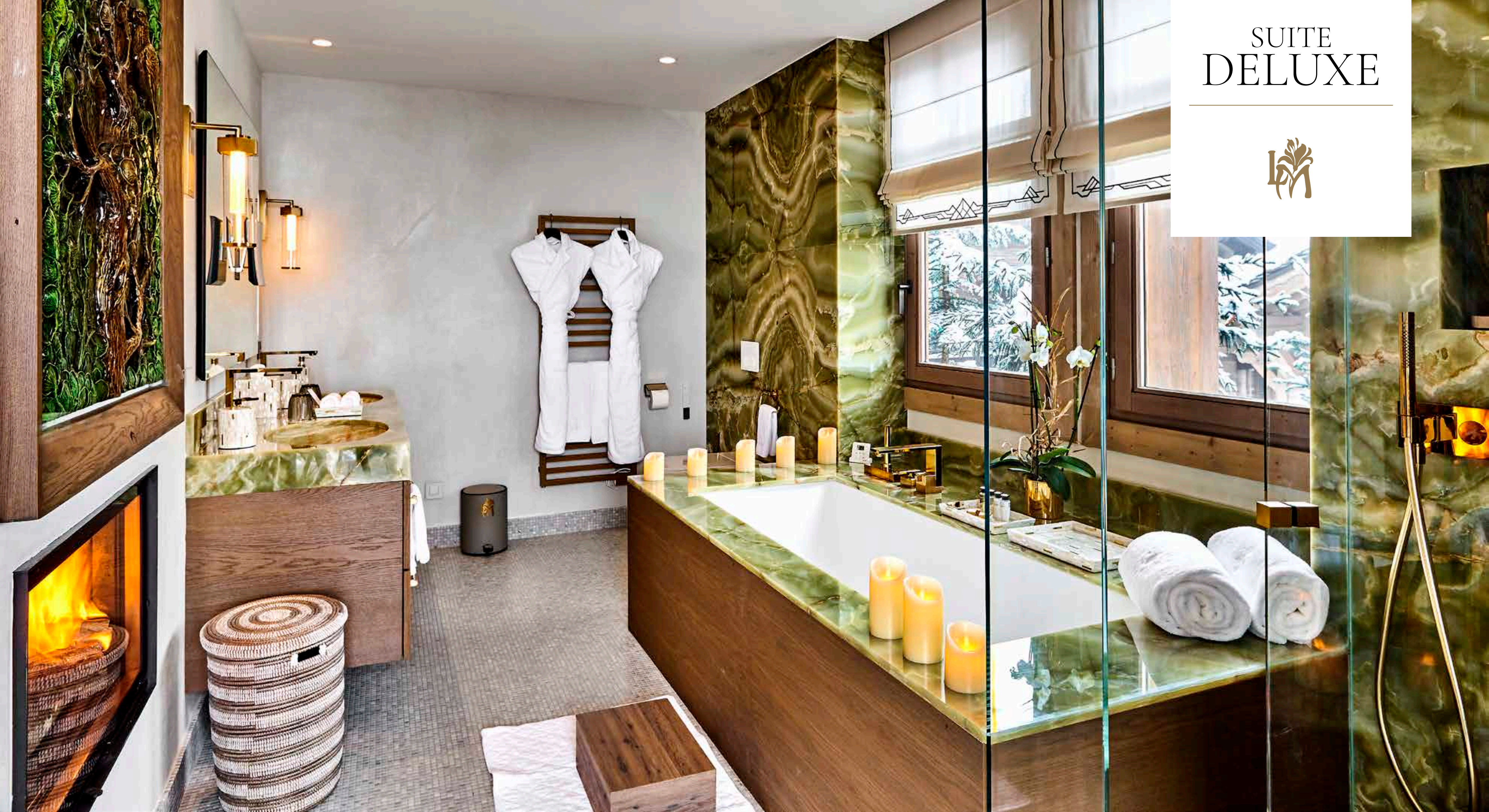


SUITE
DELUXE



SUITE
DELUXE





SUITE DELUXE





SUITE
DELUXE

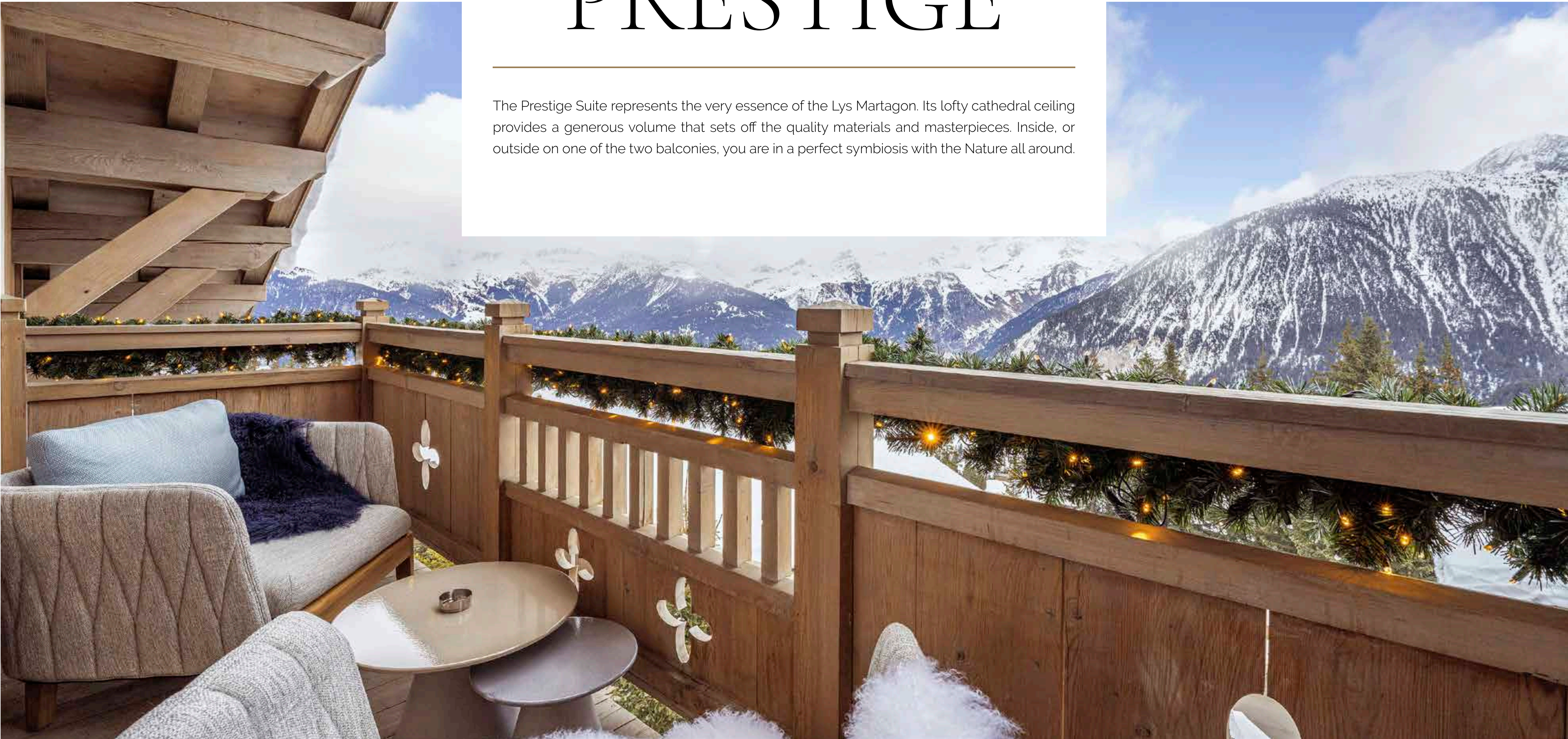


SUITE
DELUXE



SUITE PRESTIGE

The Prestige Suite represents the very essence of the Lys Martagon. Its lofty cathedral ceiling provides a generous volume that sets off the quality materials and masterpieces. Inside, or outside on one of the two balconies, you are in a perfect symbiosis with the Nature all around.



SUITE PRESTIGE



- 70 sqm
- Balcony with mountain view
- King size bed
- Hair styling station
- 11 sqm dressing
- Fireplace
- Ipad
- Safety box
- High-speed Wifi
- Sonos Sound system
- Flat screen TV including Apple TV, Chromecast and streaming services (Netflix, YouTube...)
- Minibar
- Nespresso machine
- Bathroom with bathtub and shower cubicle, 2 toilets, 2 bidets
- Newspapers deliveries upon request
- Wake up service

SUITE PRESTIGE



SUITE PRESTIGE



SUITE
PRESTIGE



SUITE
PRESTIGE



SUITE
PRESTIGE





LM Spa

MAGIC TO THE SENSES

LM SPA BY SKINCEUTICALS®

Welcome to the plush atmosphere of our 280 m² Spa with Art Deco and Art Nouveau accents, their sinuous curves and rounded lines fostering a sense of well-being. Mind and body will experience our Spa as a positive place, with a waterfall wall, indoor swimming pool, relaxation lounge, two sumptuous treatment rooms, a steam room, sauna, ice fountain, a rain shower, and both indoor and outdoor jacuzzis. The Tisanerie allows you to sample our herbal infusions. Our Spa is deliberately located apart from our Fitness Space*, so as to offer a really private haven of peace, full of serenity and softness.

* Separately located in a different part of the hotel, and equipped with the latest sophisticated professional facilities, our 60 m² Fitness Space offers you, for example, physical training, yoga and Pilates courses, and tailored sports coaching (indoor or outdoor).







LM
SPA



L'ORÉAL
PARIS

 SKINCEUTICALS
ADVANCED PROFESSIONAL SKINCARE





LM
SPA



L'ORÉAL
PARIS

 SKINCEUTICALS
ADVANCED PROFESSIONAL SKINCARE



LM
SPA



L'ORÉAL
PARIS

 SKINCEUTICALS
ADVANCED PROFESSIONAL SKINCARE



LM
SPA



L'ORÉAL
PARIS

 SKINCEUTICALS
ADVANCED PROFESSIONAL SKINCARE

THE MAGIC OF THE FORBIDDEN

«LE PROHIBITION BAR»

For a secret rendezvous, let yourself be surprised by the phantasmagorical atmosphere, the cocktails with the scent of the forbidden to be savoured in the deliciously hushed atmosphere of the 20s.

Welcome to the land of prohibition!

Hidden from view, you will be propelled into another world for a tea-time or an after-hour...



PROHIBITION BAR



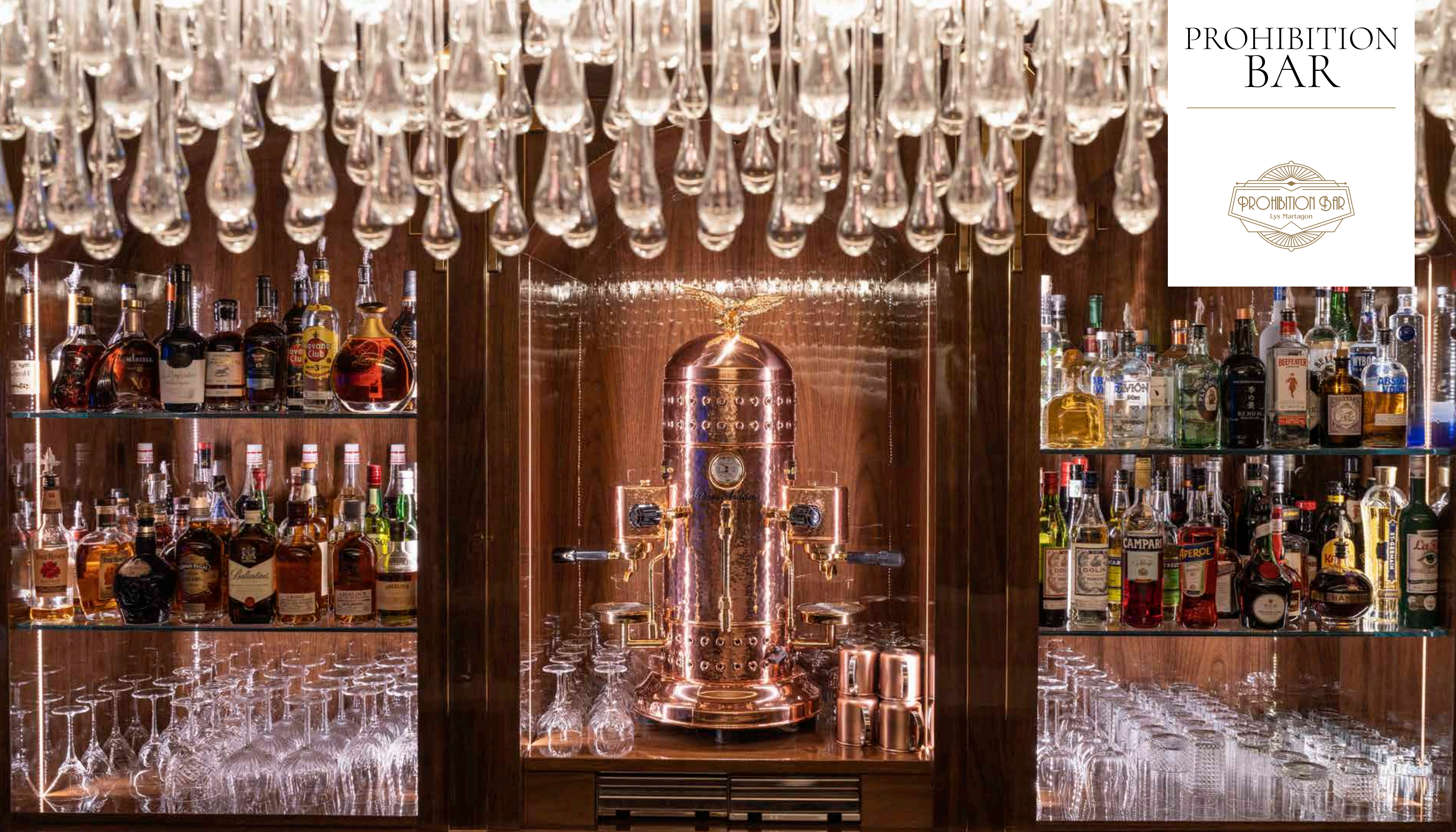
PROHIBITION BAR



PROHIBITION BAR



PROHIBITION BAR





PROHIBITION BAR





PROHIBITION BAR





Restaurant «Le Lys»

MAGIC IN GASTRONOMY

RESTAURANT «LE LYS»

Imagine a place that is a real enchantment for the eyes and the palates. Directed by a top Chef, our panoramic gastronomic restaurant revolves round a creative, gourmet menu firmly rooted in the local terroir, perfectly complemented by a prestigious wine list. Give your palate a treat with a private tasting to let you sample the wine-makers' treasures in our cellar. An experience for the senses and the taste-buds, along with innovate 3D animations.



Ski-room

MAGIC IN THE SNOW

SKI-ROOM BY BERNARD ORCEL®

It begins with a ski-in/ski-out getaway...Put on your skis from our private ski room and go directly to the Bellecôte slope. Before setting out in the tracks of the champions, you can seek advice and fit yourself out with our local partner Bernard Orcel, an expert in ski services, ski-wear, and high-end ready-to-wear fashion.

Finally, shut your eyes, breathe softly and snatch a snowflake, this is the first lesson in the magic of the Alps.

BO
BERNARD ORCEL
COURCHEVEL



Restaurant «Le Lys»

MAGIC IN GASTRONOMY

RESTAURANT «LE LYS»

Imagine a place that is a real enchantment for the eyes and the palates. Directed by a top Chef, our panoramic gastronomic restaurant revolves round a creative, gourmet menu firmly rooted in the local terroir, perfectly complemented by a prestigious wine list. Give your palate a treat with a private tasting to let you sample the wine-makers' treasures in our cellar. An experience for the senses and the taste-buds, along with innovate 3D animations.

RESTAURANT LE LYS



RESTAURANT LE LYS

RESTAURANT

LE LYS
COURCHEVEL

LYS MARTAGON





Children

MAGIC OF RECKLESSNESS

CHILDREN

Children are also pampered at Lys Martagon! Our games room is equipped with the latest consoles and video games as well as a 3D animation system (outside).

Board games are also available and a nanny service is available on request.



HOME
CINEMA





Tailor-made service

TO SERVE_{YOU}

TAILOR-MADE SERVICE

Our «Clefs d'Or» concierge will provide you with a high quality service.
He is the keystone of this personalised service, capable of satisfying all your desires.

He can organise transfers, travel (cars, helicopters, private planes...),
recommend the most secret addresses...

Thanks to his network, he will be able to achieve the impossible throughout
your stay at Lys Martagon.



COME AND DISCOVER ALL OUR MAGIC



464, ROUTE DE BELLECÔTE - 73120 COURCHEVEL 1850 - +33 (0)4 79 00 12 50 - CONTACT@LYS-MARTAGON.COM

WWW.LYS-MARTAGON.COM